

phone 415-871-0864 email info@unibrace.com

Studiolevin Inc. assumes no responsibility for adhering to factory warranty specifications. All aftermarket modifications performed to the vehicle by the owner are his/her sole responsibility. All aftermarket parts are for off road use only. This UNibrace XBQ must not be used as a seat belt harness bar or as a structural member for any additional purpose.

List of parts:

- Powdercoated aluminum **UNibrace XBQ**
- Five (5) Steel nutserts (one extra included)
- Four (4) M8 Stainless Steel socket cap fasteners

List of required tools:

- T-30 Torx driver
- M-30 Torx driver
- Nutsert Tool (www.mcmaster.com part # 96349A815)  
 Catalog page # 3241  
<http://www.mcmaster.com/#96349a815/=1iavmg>
- Center punch
- Metal scribe
- 5mm Allen wrench (**T handle suggested**)
- 1/8" Drill bit
- 1/4" Drill bit
- 1/2" Drill bit (Cobalt bits suggested!)
- **Alternate — 1/2" hole saw or stepped bit**
- Electric drill (that can accommodate a 1/2" bit or use reduced shank bit)
- Standard flat head screw driver
- Hammer
- **An extra set of hands for selected installation steps**

Recommended tools:

- Vacuum cleaner
- Rat tail file
- Bungee cords
- Blue Loctite
- Wooden Mallet



Recommended nutsert tool shown with stainless steel bolts and cad plated nutserts

Thank you for purchasing the **UNibrace XB/UB-3/XBQ**.

All information is © 2015 Studiolevin Inc.

For a successful installation **we strongly recommend patience** and reading the instructions thoroughly. Begin by reviewing the contents of the package and familiarizing yourself with all components. Assemble your tools prior to the installation process and once again.....**be patient**.

**Please Note:** This method is a general guideline to installation without removing the interior panels. It is less precise because you cannot see the location of spot welds and seam gaps in the sheetmetal, but far easier. Please review this guide and the model specific guides to see which is best for you.



**Step 1** — Clean out the hatch.



**Step 2** — Place some tape over the area where the UNibrace will be mounted.



**Step 3** — Check fitment with the seats up.  
Ensure that the seats lock in place properly with your  
UNibrace placement.



**Step 4** — (For MkVI only) Ensure the UNibrace  
clears the child seat tethers.



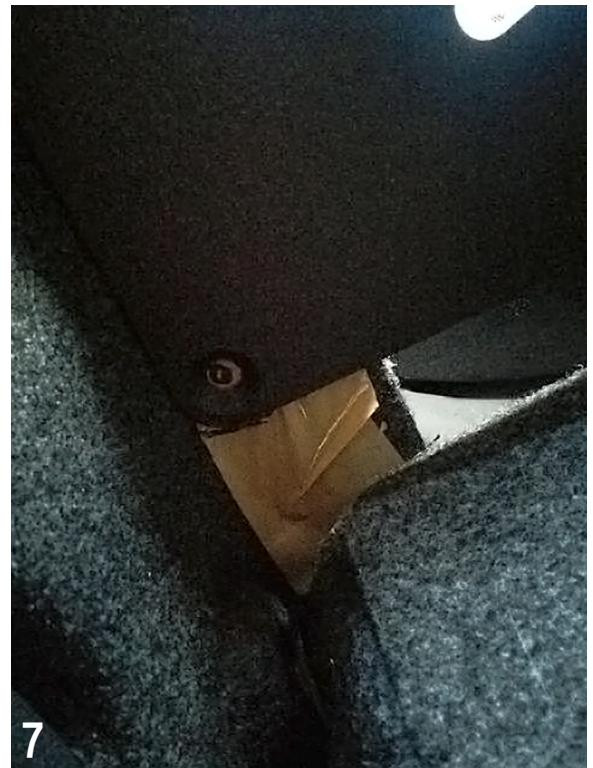
**Step 5** — Once you've determined the right placement use some bungee cords to keep the UNibrace XB/XB-3/XBQ in place.



**Step 6** — Fold the seats back down and mark the mounting points for the UNibrace XB/XB-3/XBQ with a sharpie. (Top)



**Step 7** — Fold the seats back down and mark the mounting points for the UNibrace XB/XB-3/XBQ with a sharpie. (Bottom)



**Step 8** — Put the UNibrace to the side and use a Utility or X-Acto knife to cut flaps at the mounting points.



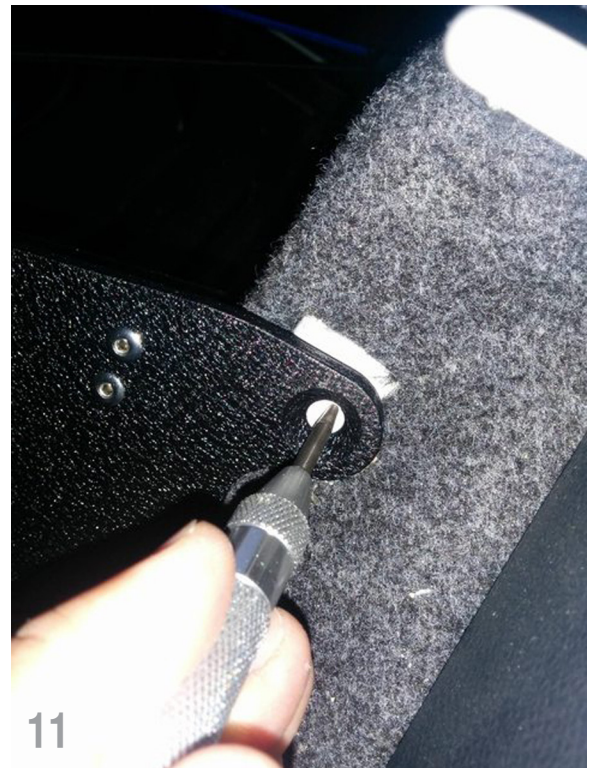
**Step 10** — Put the UNibrace back in place, secure with bungees, and check the fitment again.



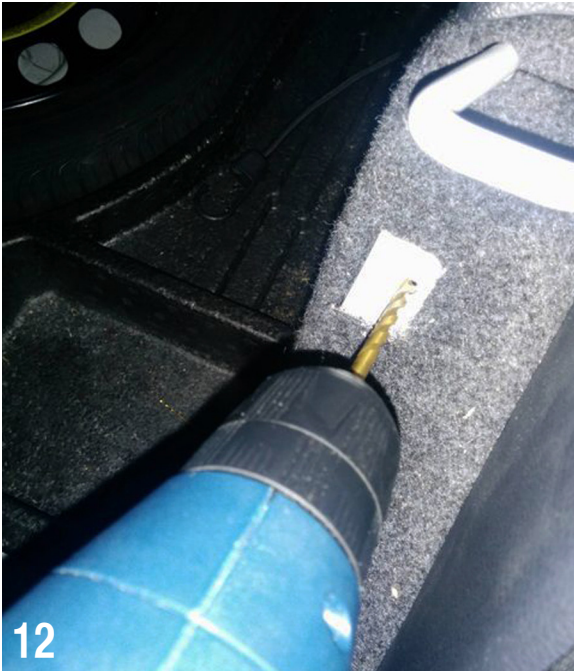
**Step 9** — If you just cut 3 sides and fold over the flap while installing the cut piece can be put back in place afterwards with some glue for a clean appearance.



**Step 11** — Mark the center of the first mounting point with a center punch. Only do one mounting point for now. We will do a single nutsert at a time and then fasten that hex head fastener before punching any more mounting points. This increases the chance of getting a good fitment and prevents the accumulation of errors.



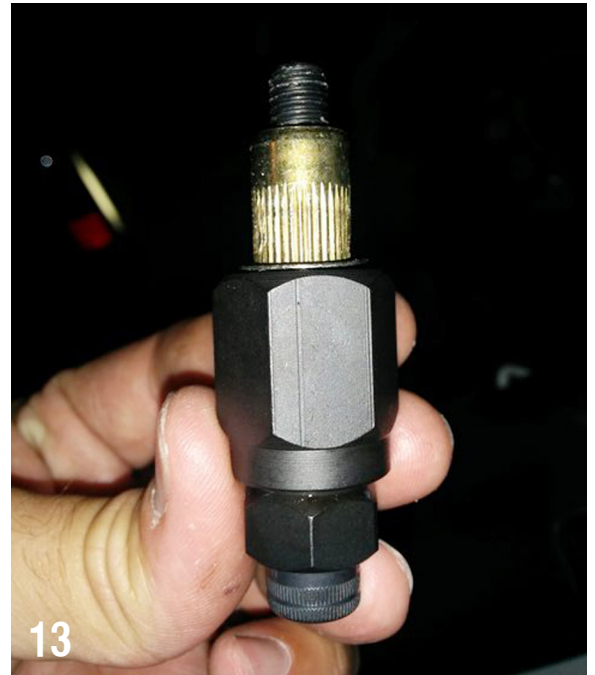
**Step 12** — Drill a pilot hole, and then progressively work your way up to a 1/2" hole for the nutsert. It is actually easier to do this in up to 5 steps, by gradually increasing the drill bit size each time. This is faster and leads to a cleaner, more symmetrical hole. Use new carbon titanium drill bits. If the hole is tight use a rat-tailed file or tapered drill bit to slightly enlarge the hole until the nutsert fits. Go slowly and proceed with care.



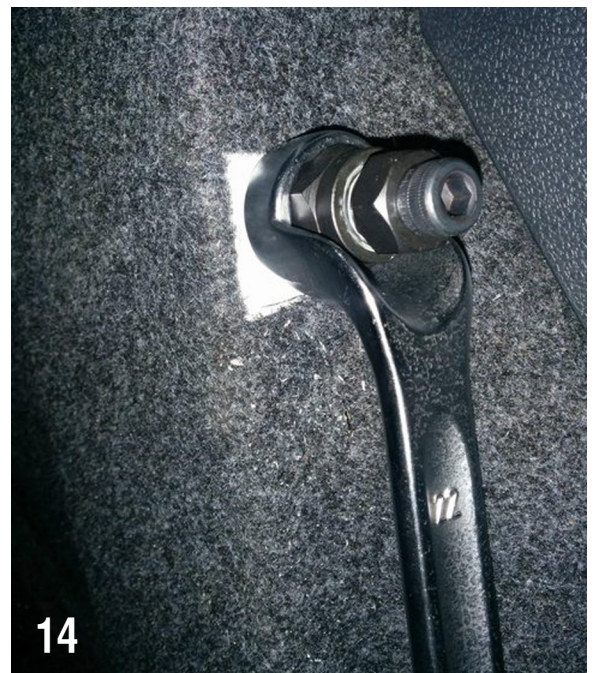
**Step 14** — Use a 22mm open-ended spanner or adjustable wrench to hold the wider part of the nutsert tool, and prevent it from spinning around.



**Step 13** — The nutsert tool can be confusing. You need to thread the long bolt through the main piece of the tool. I find it useful to then thread the nutsert onto the end of the bolt and use the tool to push the nutsert into the hole snugly. Use a wooden mallet to gently tap the nutsert into



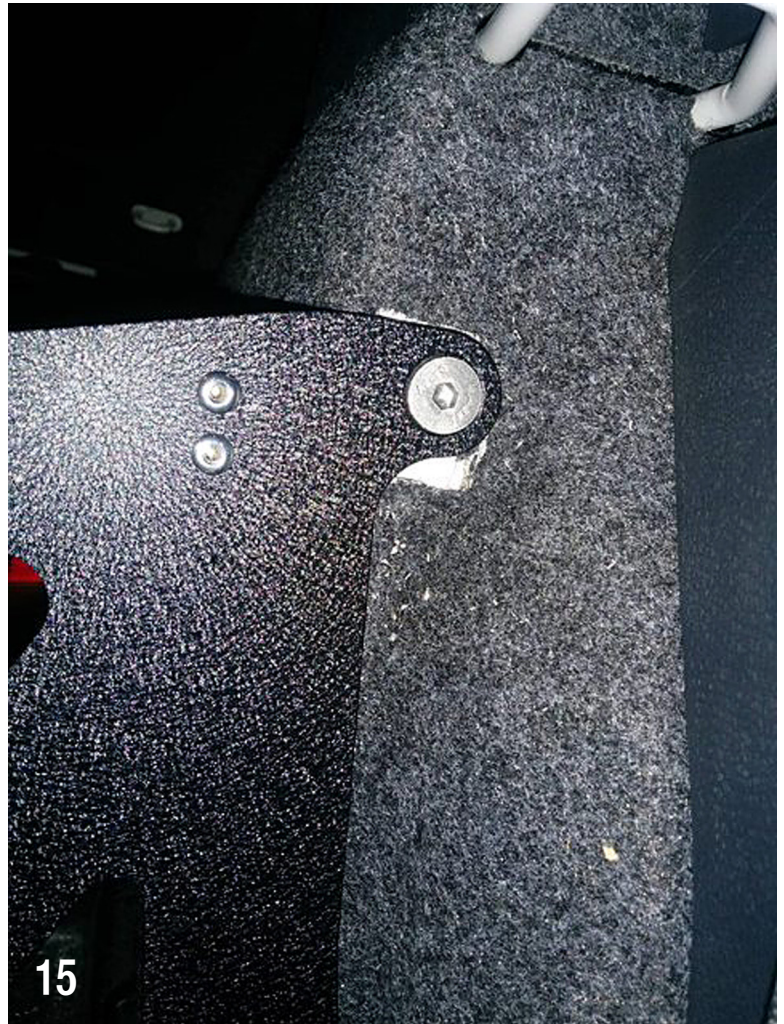
**Step 14 (continued)** — Use an 11/16" socket wrench to turn the smaller part of the nutsert tool clockwise. This will cause part of the nutsert to be squashed and expand inside the hole like a rivet, locking it in place.



**Step 15** — Fasten the UNibrace at that mounting point with the provided stainless steel hex fastener.

With the first mounting point fastened, use the punch to mark the drilling point at the second mounting point. Then remove the bolt from the first fastening point and put the UNibrace to the side. Drill a hole at the new fastening point working up to 1/2". Install the nutsert. Fasten the first two points and move onto the third point and so on. Remember to fasten the UNibrace at all existing points before using the punch to mark the next point. This takes a few minutes extra but significantly improves your chances of getting a good fitment.

Finally fold the carpet flaps back in place, use double stick tape or glue if you like, and bolt the UNibrace in place on top of the carpet. It is recommended that you insert the fasteners one by one and then tighten them all together in series like you would tighten lug nuts. Don't forget to use blue Loctite to make sure the bolts don't back out.



**Step 16** — Go for a ride and have your mind blown!  
Thanks to Golf Mk6 Foru member Speedster for his help in making this DIY. It is the community that makes producing these products worthwhile.

